

Your contacts for the safety evaluation
of fragrances and cosmetics



MYLÈNE VALIN
In vitro Toxicology Study Director
mylene.valin@fr.citoxlab.com
+33 (0)2 32 29 26 26



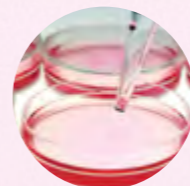
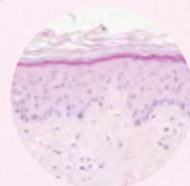
SYLVIE ROMET
Business Development Manager
sylvie.romet@fr.citoxlab.com
+33 (0)6 77 29 72 01

Citoxlab France

+33 2 32 29 26 26 - contact.france@citoxlab.com
B.P. 563 - 27005 Evreux Cedex, France



Your partner for
the safety evaluation of fragrances
and cosmetics



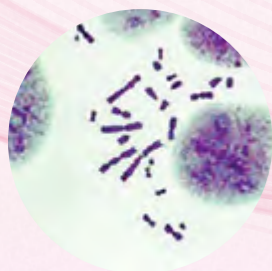
www.citoxlab.com

New alternative methods

The EU Cosmetic Regulation prohibits testing of cosmetic ingredients and finished products on animals in Europe, and does not allow placing on the European market finished products which were entirely or partially tested in animals.

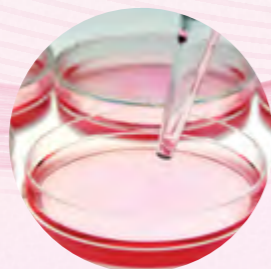
To face this regulatory challenge, Citoxlab provides the latest *in vitro* solutions to help you assess the safety of your cosmetic ingredients and final products.

Citoxlab is a member of EU-NETVAL (European Union Network of Laboratories for the Validation of Alternative Methods) and involved in EURL ECVAM validation studies that serve to assess the reliability and relevance of alternative methods with a potential to replace, reduce, and refine the use of animals for scientific purposes.



Genetic toxicology

- Ames test (OECD 471)
- *In vitro* micronucleus test on cell line or human lymphocyte (OECD 487)
- *In vitro* chromosome aberrations test (OECD 473)
- Mouse Lymphoma Assay - MLA (OECD 490)



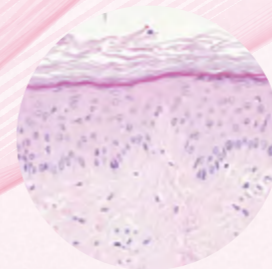
Cytotoxicity

- Acute toxicity 3T3 NRU (OECD 129)



Irritation and corrosion

- 3D skin model corrosion test (OECD 431)
- 3D skin model irritation test (OECD 439) - Optional Interleukin-1 α
- 3D eye model irritation test (OECD 492)
- BCOP for *in vitro* eye corrosion / irritation (OECD 437)



Skin sensitisation

- Direct Peptide Reactivity Assay - DPRA (OECD 442C)
- ARE-Nrf2 Luciferase Test Method KeratinoSensTM (OECD 442D)
- Human Cell Line Activation Test - h-CLAT (OECD 442E)



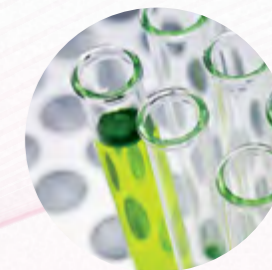
Phototoxicity

- Photo-3T3 NRU (OECD 432)



Cutaneous penetration

- Static Franz cell (OECD 428)



Screening non-GLP studies

- All the tests including:
- Mini Ames
 - Mini *in vitro* micronucleus test

Safety assessment of your cosmetic ingredients, plant extracts, fragrance mixtures and final products:

- GLP-certified test facility
- Extensive experience with more than 5000 genetic and *in vitro* toxicology studies
- Robust expertise in skin penetration, immunohistochemistry and histopathology: Tissue Cross Reactivity, antigen distribution
- Proficiency in testing all types of products
- Screening for safer new cosmetic ingredients in your innovative formulations
- Support in a wide range of technologies: genomics, biomarkers, analytical chemistry, etc.
- Member of Cosmetic Valley, ESTIV